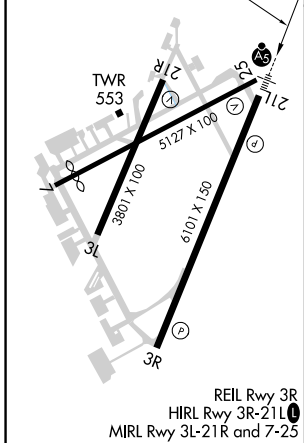
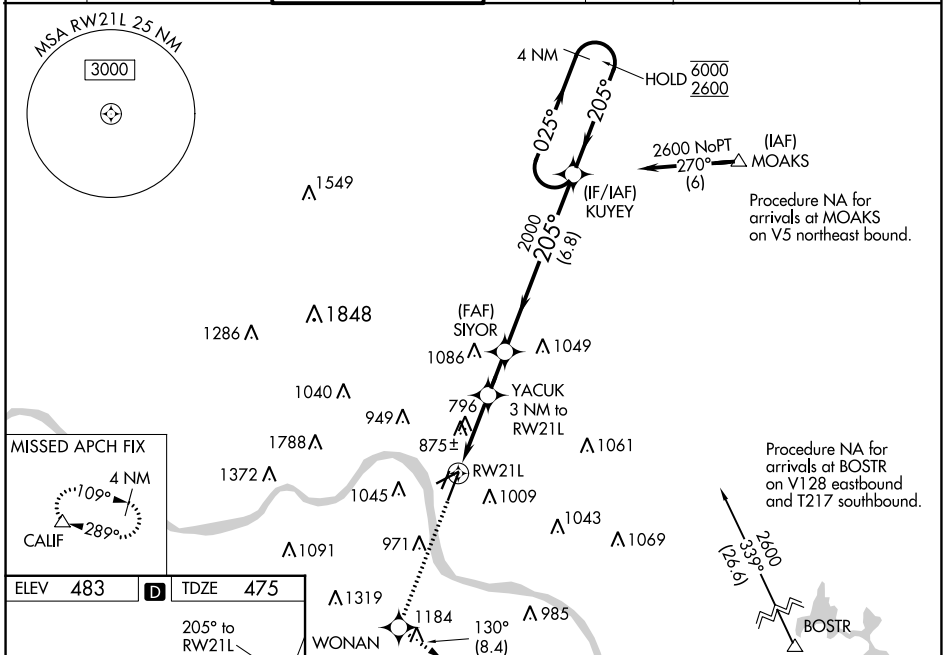


WAAS CH <b>42511</b> W21A	APP CRS <b>205°</b>	Rwy Idg TDZE Apt Elev	<b>6101</b> <b>475</b> <b>483</b>
---------------------------------	------------------------	-----------------------------	---

# RNAV (GPS) RWY 21L

CINCINNATI MUNI/LUNKEN FLD (LUK)

RNP APCH.				MALSR		MISSED APPROACH: Climb to 2500 direct WONAN and on track 130° to CALIF and hold, continue climb-in-hold to 2600.	
<p>▼ Circling NA for Cat D north of Rwy 7 and northwest of Rwy 21R. Circling Rwy 3L, 7, 21R NA at night. Rwy 21L helicopter visibility reduction below 3/4 SM NA. Inop table does not apply to LNAV/VNAV. For uncompensated Baro-VNAV systems, LNAV/VNAV NA below -15°C or above 54°C. For inop ALS, increase LPV all Cats visibility to RVR 4500, LNAV Cats A/B visibility to RVR 5500 and LNAV Cats C/D visibility to 2 SM.</p>							
ATIS <b>120.25</b>	CINCINNATI APP CON <b>121.0 254.25</b>	LUNKEN TOWER ★ <b>118.7 (CTAF) 257.8</b>	GND CON <b>121.9</b>	CLNC DEL <b>121.9</b>	CLNC DEL <b>124.9</b> (when twr closed)	UNICOM <b>122.95</b>	



ELEV 483	TDZE 475	205° to RWY 21L
2500 WONAN	Ir 130°	CALIF
*LNAV only.		
YACUK 2.1 NM to RWY 21L	SIYOR 3 NM to RWY 21L	KUYEY 4 NM Holding Pattern
2000	2000	6000 / 2600
205°	205°	025° / 205°
GP 3.00°	TCH 39	

CATEGORY	A	B	C	D
LPV DA		756/40	281 (300-3/4)	
LNAV/VNAV DA		1217-2 1/4	742 (800-2 1/4)	
LNAV MDA	1200/40	725 (800-3/4)	1200-1 5/8	725 (800-1 3/8)
<input checked="" type="checkbox"/> CIRCLING	1300-1 1/4 817 (900-1 1/4)	1360-1 1/4 877 (900-1 1/4)	1360-2 1/2 877 (900-2 1/2)	1360-2 3/4 877 (900-2 3/4)